



Sailing Instructions

**KING HARBOR YACHT CLUB
REDONDO BEACH, CALIFORNIA**

Malibu Race

Saturday, May 11, 2019

Third Race of the KHYC 2019 Spinnaker Series

1) Rules

- 1.1) This regatta will be governed by the 'rules' as defined in the Current Racing Rules of Sailing.
- 1.2) The prescriptions of USSA and these Sailing Instructions shall apply.
- 1.3) RRS Rule 82 will not apply to this event.
- 1.4) This is a US Nearshore event with paragraph 3.8.2 modified to only require any type of VHF radio.

2) Notices to Competitors

- 2.1) Notices to competitors will be posted on the Official Notice Board located on the first floor opposite the Race Room and are also available at regattanetwork.com.
- 2.2) Class splits for the entire series were determined using PHRF Area B WL ratings, PHRF-A (118 and lower), PHRF-B (119 and higher), PHRF-V (136 and higher with a performance factor greater than 1.76). This does not alter the rating protocol used to score this event

3) Changes to Sailing Instructions

Any changes to the sailing instructions will be posted before 1000 hours on the day it will take effect, except that any changes to the schedule of races will be posted by 2000 on the day before it will take effect.

4) Signals Made Ashore

- 4.1) Signals made ashore will be displayed on the KHYC flag pole located on the East patio of the clubhouse.
- 4.2) If the postponement signal (AP) is displayed the warning signal will be made no sooner than one hour after the AP is lowered.

5) Schedule of Races

- 5.1) One race is scheduled.
- 5.2) The first warning for "B" boats will be at 1155. "B" boats will start at 1200. "V" boats will start at 1205. "A" boats warning will be at 1225, start at 1230. Other classes will start in the interval between the "V" start at 1205 and the "A" warning signal at 1225.
- 5.3) Multiple horns may be sounded prior to the first warning.

Sailing Instructions

6) Signals on the Race Committee Boat

Classes will start in the following order:

1155 PHRF-B Warning	1225 PHRF-A Warning
1200 PHRF-B Start, Flag E	1230 PHRF-A Start, Flag D
1205 PHRF-V Start, Flag V	

Start times and flags for other classes will be posted at the club on race day.

7) The Race Course

- 7.1) The racing area will be in the King Harbor/Malibu area as shown on the Malibu Race Course Chart.
- 7.2) The course will be:
: **Start @ S – Cs – Malibu Bay Watch Buoy – G – W - Finish.**
- 7.3) The distance is approximately 35.5 nm.

8) Marks

- 8.1) Nearby marks are spar buoys or inflatable replacements
- 8.2) The Malibu Baywatch buoy is approximately 1000 feet from the Malibu pier on a bearing of 300 degrees true. If this buoy is not on station racers shall start the return leg when they reach the reported position.
- 8.3) "W" mark is the white center channel buoy at the entrance to King Harbor.
- 8.4) Marks are in the approximate positions defined on the current KHYC Mark Guide.

9) The Start

- 9.1) Race will be started using rule 26 with classes starting per paragraph 6 of this document.
- 9.2) The start line will be between S-Mark and a flag on the port side of the RC boat anchored to Starboard of S-Mark.
- 9.3) All boats must check in with the Race Committee on the water prior to **"their"** class warning signal.
- 9.4) Boats whose preparatory signal has not been made shall **keep clear of all boats** whose preparatory signal has been made.
- 9.5) The Race Committee will attempt to call on the course side (OCS) boats on VHF channel 78 after the starting signal. Failure to call a boat OCS is not grounds for redress.

10) The Finish

- 10.1) The finish line will be at the harbor entrance between the R/C Boat and the red light on the east jetty ("east jetty light #2").
- 10.2) Take your own time at the white entrance buoy (W) if the committee boat is not on station.

Sailing Instructions

11) Penalty System

- 11.1) The 720-degree turn penalty is replaced with a 360-degree turn penalty, to include one tack and one jibe, modifying the Scoring Penalty, rules 44.1, 44.2 and 44.3 shall not apply.
- 11.2) Boats that accept and execute the turn's penalty shall sign up to that effect on the form posted on the Official Notice Board after the day's racing and within the protest time limit.

12) Protests

- 12.1) Boats intending to protest must notify the RC boat upon finishing.
- 12.2) Protests shall be written on forms available at the club and delivered to the Race Chairman, or PRO within 45 minutes after the RC docks. The committee will make one sound and post docking time on the official notice board.
- 12.3) Protests will be posted as they are submitted.
- 12.4) Protests will be heard in the approximate order of receipt as soon as possible.

13) Scoring

- 13.1) The Low Point scoring system of RRS Appendix A.4 will apply as a single race event.
- 13.2) PHRF **Random Leg Course** ratings apply with TOT scoring.
- 13.3) Cruising Boats will be scored TOT using their PHRF ratings if available, otherwise the Race Committee will assign an appropriate rating.
- 13.4) PHRF & SCYA club affiliation is not required for Cruiser, Multihull and One Design classes.
- 13.5) One Design and Multihull entries must meet the eligibility requirements of their classes.
- 13.6) Non-spinnaker offsets will be applied to both PHRF and Cruiser entries.

14) Safety (Category and Crew)

- 14.2) A boat retiring **must** notify the committee ASAP or before the last boat to finish (whichever is sooner), KHYC and the RC monitor VHF Channel 78 or call Dick Reinhardt (Official Scorer) at (310) 488-7129.

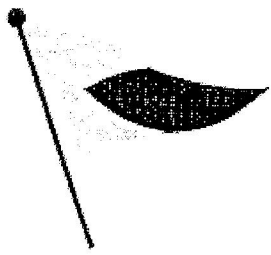
15) Prizes

Take home trophies will be awarded Saturday, as soon as possible after the event, on the upper level of the clubhouse. The Fisherman's (PHRF A) and the Jimmie Morris (PHRF B) perpetual trophies will be awarded at the KHYC annual awards event. PHRF V will be competing for their own perpetual if one is dedicated.

16) Hospitality

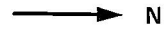
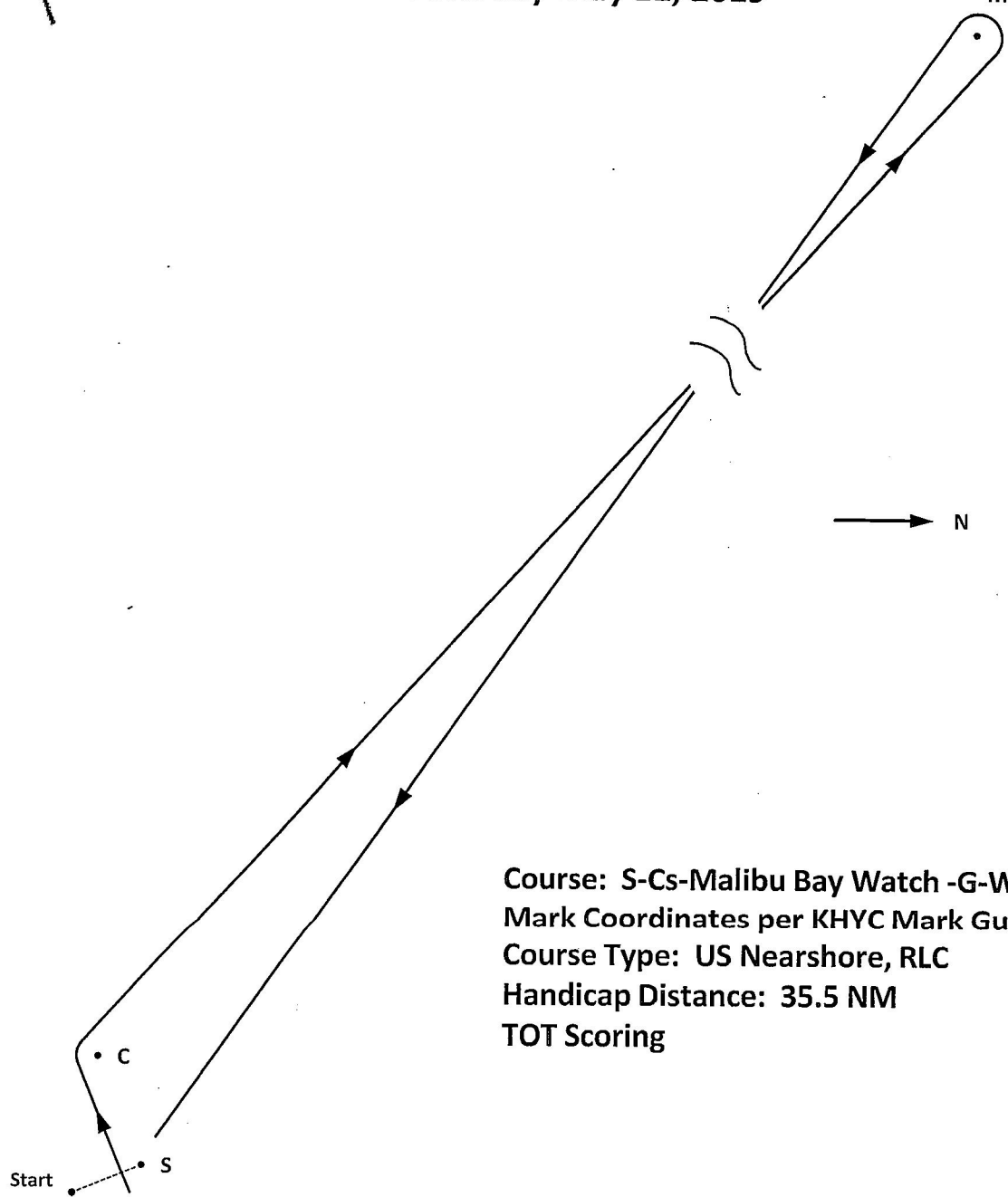
All participants are welcome in the Clubhouse before and after the race. The Bar opens at 1500 and post race hors d'oeuvres will be served.

Race Chair: Dorian Harris dorian.harris628@gmail.com..... (310) 259-1040
Assistant Race Chair: Fred Cottrell fdcottrell@msn.com.....(310) 938-3322
KHYC Office:(310) 376-2459.....FAX:.....(310) 374-5848



**KHYC 2019 Spinnaker Series
Race # 3 'Malibu & Return'
Saturday May 11, 2019**

MBW



**Course: S-Cs-Malibu Bay Watch -G-W-Finish
Mark Coordinates per KHYC Mark Guide
Course Type: US Nearshore, RLC
Handicap Distance: 35.5 NM
TOT Scoring**

