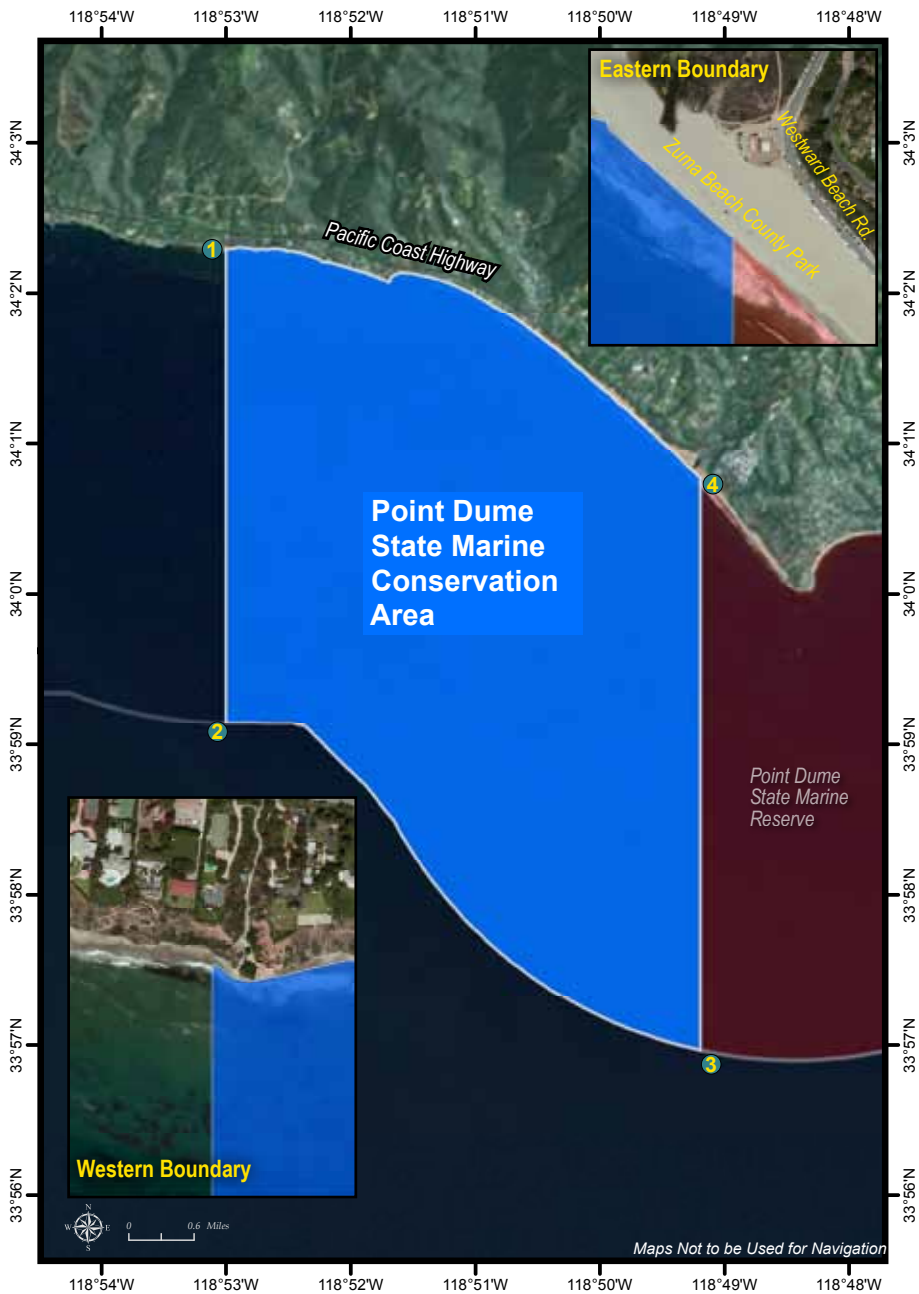




Point Dume State Marine Conservation Area









Point Dume State Marine Conservation Area Boundary and Regulations *from* California Code of Regulations Title 14, Section 632 subsection (b)(95)

Boundary:

(A) This area is bounded by the mean high tide line and straight lines connecting the following points in the order listed except where noted:

- 34° 02.28' N. lat. 118° 53.00' W. long. 
- 33° 59.14' N. lat. 118° 53.00' W. long. ; thence southeastward along the three nautical mile offshore boundary to
- 33° 56.96' N. lat. 118° 49.20' W. long. ; and
- 34° 00.76' N. lat. 118° 49.20' W. long. 

Permitted/Prohibited Uses:

(B) Take of all living marine resources is prohibited except:

1. The recreational take of pelagic finfish* [subsection 632(a)(3)], including Pacific bonito, and white seabass by spearfishing [Section 1.76] is allowed.
2. The commercial take of coastal pelagic species** [Section 1.39] by round haul net [Section 8750, Fish and Game Code] and swordfish by harpoon [subsection 107(f)(1)] is allowed.
3. Take pursuant to activities authorized under subsection 632(b)(95) (C) is allowed.

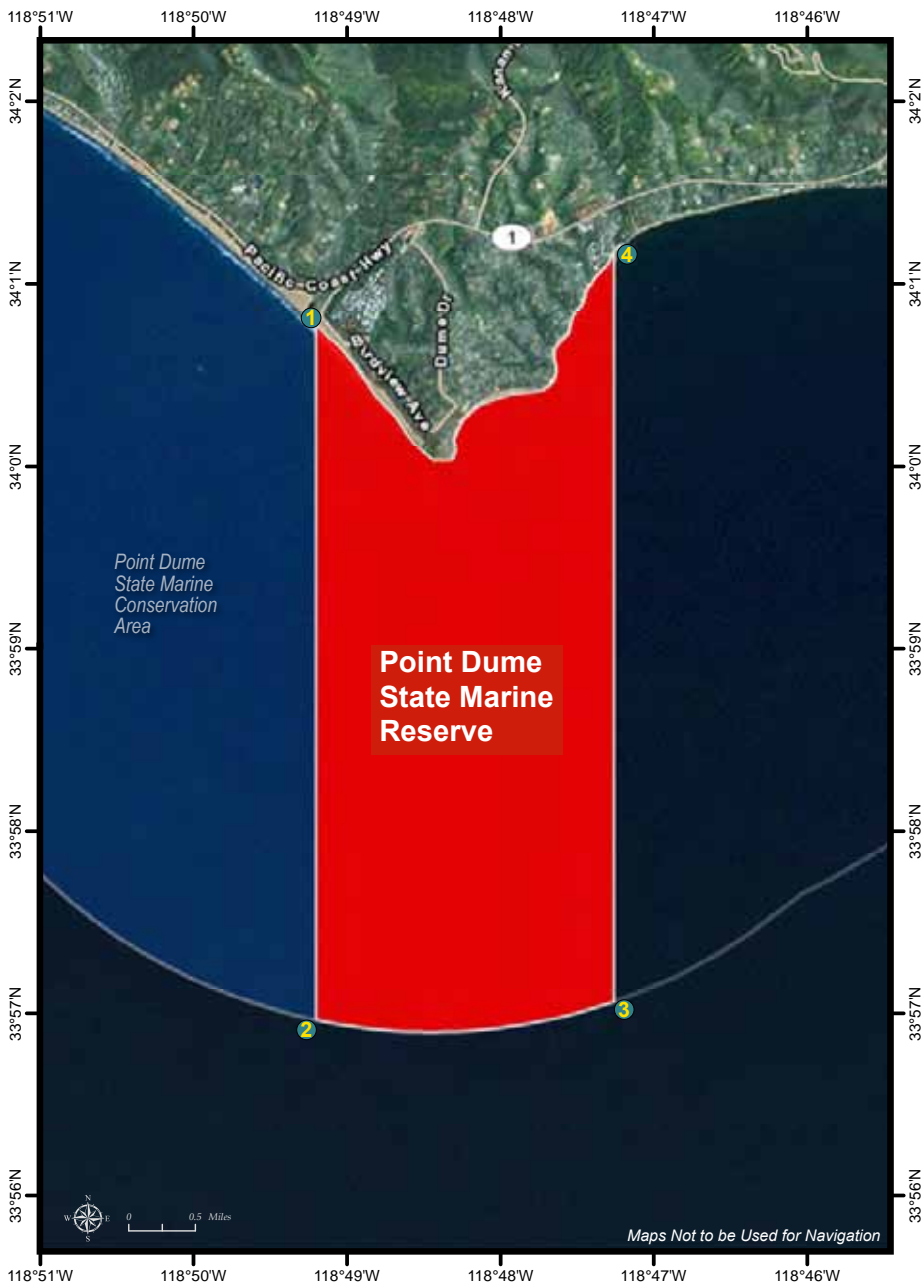
(C) Beach nourishment and other sediment management activities are allowed inside the conservation area pursuant to any required federal, state and local permits, or as otherwise authorized by the Department.

*Pelagic finfish are defined here as: northern anchovy (*Engraulis mordax*), barracudas (*Sphyraena* spp.), billfishes (family Istiophoridae), dolphinfish (*Coryphaena hippurus*), Pacific herring (*Clupea pallasii*), jack mackerel (*Trachurus symmetricus*), Pacific mackerel (*Scomber japonicus*), salmon (*Oncorhynchus* spp.), Pacific sardine (*Sardinops sagax*), blue shark (*Prionace glauca*), salmon shark (*Lamna ditropis*), shortfin mako shark (*Isurus oxyrinchus*), thresher sharks (*Alopias* spp.), swordfish (*Xiphias gladius*), tunas (family Scombridae), and yellowtail (*Seriola lalandi*). The commercial take of marlin is not allowed.

** Coastal pelagic species are defined here as: northern anchovy (*Engraulis mordax*), Pacific sardine (*Sardinops sagax*), Pacific mackerel (*Scomber japonicus*), jack mackerel (*Trachurus symmetricus*) and market squid (*Loligo opalescens*).



Point Dume State Marine Reserve





Point Dume State Marine Reserve Boundary and Regulations *from* California Code of Regulations Title 14, Section 632 subsection (b)(96)

Boundary:

(A) This area is bounded by the mean high tide line and straight lines connecting the following points in the order listed except where noted:

- 34° 00.76' N. lat. 118° 49.20' W. long. ①;
- 33° 56.96' N. lat. 118° 49.20' W. long. ②; thence eastward along the three nautical mile offshore boundary to
- 33° 57.06' N. lat. 118° 47.26' W. long. ③; and
- 34° 01.20' N. lat. 118° 47.26' W. long. ④

Permitted/Prohibited Uses

(B) Take of all living marine resources is prohibited.





Point Vicente State Marine Conservation Area





Point Vicente State Marine Conservation Area Boundary and Regulations *from* California Code of Regulations Title 14, Section 632 subsection (b)(97)

Boundary:

(A) This area is bounded by the mean high tide line and straight lines connecting the following points in the order listed except where noted:

33° 44.80' N. lat. 118° 24.82' W. long. ①;

33° 44.80' N. lat. 118° 28.93' W. long. ②; thence southeastward along the three nautical mile offshore boundary to

33° 41.16' N. lat. 118° 23.80' W. long. ③; and

33° 44.19' N. lat. 118° 23.80' W. long. ④

Permitted/Prohibited Uses:

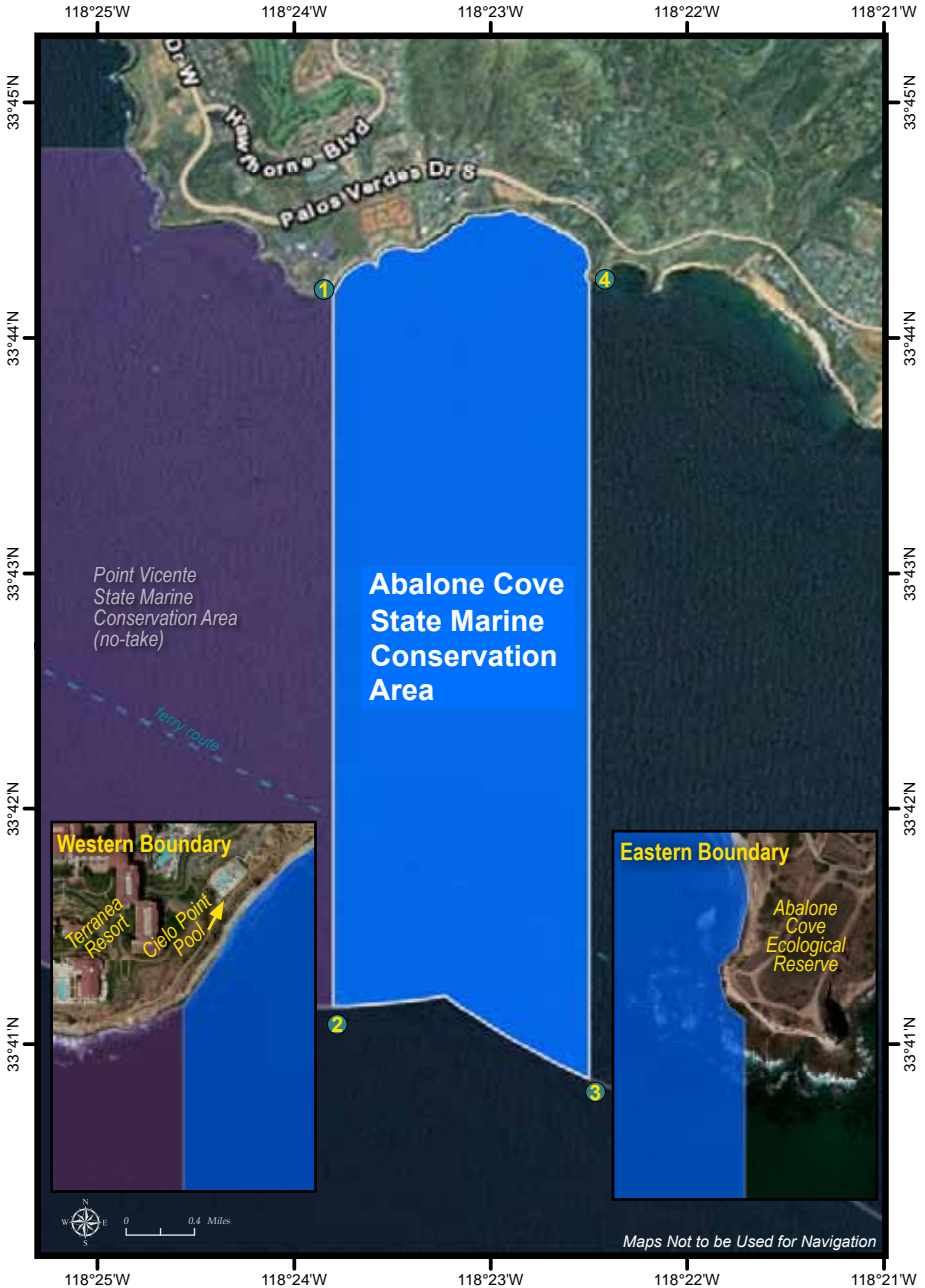
(B) Take of all living marine resources is prohibited, except for take pursuant to activities authorized under subsection 632(b)(97)(C).

(C) Remediation activities associated with the Palos Verdes Shelf Operable Unit of the Montrose Chemical Superfund Site are allowed inside the conservation area pursuant to the Interim Record of Decision issued by the United States Environmental Protection Agency and any subsequent Records of Decision.





Abalone Cove State Marine Conservation Area





Abalone Cove State Marine Conservation Area Boundary and Regulations *from* California Code of Regulations Title 14, Section 632 subsection (b)(98)

Boundary:

(A) This area is bounded by the mean high tide line and straight lines connecting the following points in the order listed except where noted:

- 33° 44.19' N. lat. 118° 23.80' W. long. ①;
- 33° 41.16' N. lat. 118° 23.80' W. long. ②; thence southeastward along the three nautical mile offshore boundary to
- 33° 40.85' N. lat. 118° 22.50' W. long. ③; and
- 33° 44.24' N. lat. 118° 22.50' W. long. ④

Permitted/Prohibited Uses

(B) Take of all living marine resources is prohibited except:

1. The recreational take of pelagic finfish* [subsection 632(a)(3)], including Pacific bonito, and white seabass by spearfishing [Section 1.76], and market squid by hand-held dip net [Section 1.42] is allowed.
2. The commercial take of coastal pelagic species** [Section 1.39] and Pacific bonito by round haul net [Section 8750, Fish and Game Code], and swordfish by harpoon [subsection 107(f)(1)] is allowed.
3. Take pursuant to activities authorized under subsection 632(b)(98) (C) is allowed.

(C) Remediation activities associated with the Palos Verdes Shelf Operable Unit of the Montrose Chemical Superfund Site are allowed inside the conservation area pursuant to the Interim Record of Decision issued by the United States Environmental Protection Agency and any subsequent Records of Decision.

*Pelagic finfish are defined here as: northern anchovy (*Engraulis mordax*), barracudas (*Sphyraena* spp.), billfishes (family Istiophoridae), dolphinfish (*Coryphaena hippurus*), Pacific herring (*Clupea pallasii*), jack mackerel (*Trachurus symmetricus*), Pacific mackerel (*Scomber japonicus*), salmon (*Oncorhynchus* spp.), Pacific sardine (*Sardinops sagax*), blue shark (*Prionace glauca*), salmon shark (*Lamna ditropis*), shortfin mako shark (*Isurus oxyrinchus*), thresher sharks (*Alopias* spp.), swordfish (*Xiphias gladius*), tunas (family Scombridae), and yellowtail (*Seriola lalandi*). The commercial take of marlin is not allowed.

** Coastal pelagic species are defined here as: northern anchovy (*Engraulis mordax*), Pacific sardine (*Sardinops sagax*), Pacific mackerel (*Scomber japonicus*), jack mackerel (*Trachurus symmetricus*) and market squid (*Loligo opalescens*).